

## Using the correct equipment

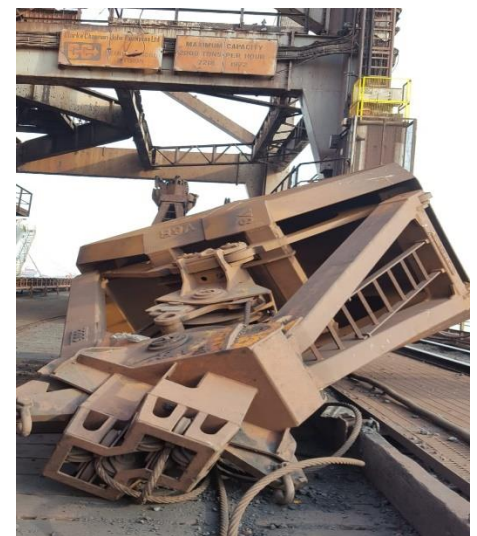
Two incidents involving port staff using the wrong type of equipment to move a load have recently occurred. Both incidents could have been avoided if the right handling method and equipment had been used.



The first occurred at Southampton during a task to tidy up some old steel rails. The original plan involved the use of a forklift truck but the smaller one was out of fuel and the larger one was too large. Instead the job was improvised and a pick-up truck and a jack were used. This unsuitable equipment resulted in handling issues and one of the team sustained badly broken fingers. This was also reportable under RIDDOR.

The second incident took place at Immingham Bulk Terminal. A large grab was preventing the moving of the ship to shore gantry crane. The decision was made to move the grab, but not using the usual method. Instead, a Loading Shovel was used to push the grab the few metres required. This method destabilised the grab and it fell over, damaging a HV trailing cable. Luckily, in this instance, no one was hurt.

Had the correct equipment been used then this incident would almost certainly not have occurred.



**Please ensure that you give all your teams a tool box talk on using the correct equipment to do the job. If they are unsure as to what that equipment is then they should ask the Supervisor or Manager.**

**If in any doubt, stop and ensure it is safe before carrying on.**

**A Checkpoint will follow.**

(An example Tool Box Talk is available on the Marine & Compliance site on iPort [HERE](#)).